

NOTES:

1. ALL WIRING TO BE AS BUILT IN TRUTRAK HARNESS KIT, UNLESS OTHERWISE NOTED.
 2. ALL WORK TO BE ACCOMPLISHED IN ACCORDANCE WITH THE APPLICABLE SECTIONS OF AC 43.13-1B.
 3. THIS DRAWING REFERENCES THE FOLLOWING DOCUMENTS:
 - TRUTRACK DOC: 166 REV G, TRUTRAK VIZION INSTALLATION GUIDE
 4. TERMINATE BOTH THE PITCH AND ROLL SERVO WIRING HARNESES PER THE VIZION WIRING DIAGRAM (USING OPTION B), AS IDENTIFIED IN THE VIZION PMA INSTALLATION GUIDE (TRUTRAK DOC. 166).
 5. SOLDER IN ACCORDANCE WITH IPC-J-STO-001H.
 6. PERFORM PIN TO PIN RINGOUT OF WIRING HARNESS.
- FOR CWS EQUIVALENT RED, MOMENTARY PUSH BUTTON, SPST-NO SWITCH MAY BE SUBSTITUTED.
 FOR GPS AND EFIS CONNECTIONS, REFER TO BENDIXING DOCUMENT 186, "APPROVED GPS AND SOFTWARE LIST".
 FOR CIRCUIT BREAKER, ALTERNATE EQUIVALENT TRIP-FREE, PUSH-PULL MANUALLY RESETTABLE 5 AMP CIRCUIT BREAKER MAY BE INSTALLED. (e.g. MS26574 OR MS22073)

REV	DESCRIPTION	DRAWN	CHECKED	APPROVED
IR	INITIAL REVISION	-	-	-
A	ADDED BOM ITEM 15 SHEET 1.	D SAM 07/15/2021	L WILDING 07/15/2021	D RANKIN 07/15/2021
B	REVISED DRAWING PER BENDIX KING RED-LINES.	J KISTLER 10/28/2021	L WILDING 10/28/2021	D RANKIN 10/28/2021
C	REVISED DRAWING PER BENDIX KING RED-LINES.	M BAIG 02/15/2022		

ITEM	QTY	PART NUMBER	DESCRIPTION	VENDOR	NOTES
18	1	MS20589-1CR	CONTROL WHEEL STEERING SWITCH	OTTO	INSTALLER SUPPLIED, REFER NOTE 7
17	1	7277-2-5	BREAKER, CIRCUIT, 5A	KLIXON	INSTALLER SUPPLIED, REFER NOTE 9
16	16	2100-045	FEMALE SOCKET CRIMP CONNECTOR PIN	BENDIXKING	
15	1	6000-064	SHEATHED MICROFIT CABLE ASSEMBLY 1M	BENDIXKING	
14	1	DG909MF2	D-SUB ADAPTER	L-COM	
13	-	-	DELETED AT REV B	-	
12	A/R	MS25036-149	TERMINAL RING, #6 HOLE, 22-16AWG	-	INSTALLER SUPPLIED
11	A/R	MS3367-1-0	CABLE TIE	-	
10	1	SC628	SONALERT 2.9KHZ	MALLORY	OPTIONAL-INSTALLER SUPPLIED
9	-	-	DELETED AT REV C	-	
8	2	2100-044	CONNECTOR D-SUB FEMALE 9 PIN	BENDIXKING	
7	2	2100-010	CONNECTOR BACKSHELL 9 PIN	BENDIXKING	
6	1	8000-177	LINK SENSOR	BENDIXKING	
5	REF	8100-065	SERVO, 24V	BENDIXKING	OPTIONAL 12 VDC PART NUMBER 8100-064
4	1	MTL106D	A/P MASTER SWITCH	ALLIED ELECTRONICS	INSTALLER SUPPLIED, EQV 5A SPDT SEALED SWITCH MAY BE SUBSTITUTED
3	1	8100-113	A/P LVL SWITCH	BENDIXKING	
2	1	8000-175	A/P CONTROL HEAD	BENDIXKING	OPTIONAL PART NUMBERS 8000-174, AND 8000-176
1	1	PA-201130-551	VIZION WIRING HARNESS	BENDIXKING	

BILL OF MATERIALS

LEGEND:

- EXISTING WIRING/EQUIPMENT
- NEW WIRING/EQUIPMENT
- AIRFRAME GROUND

PEREGRINE

7385 S PEORIA ST
UNIT C4
ENGLEWOOD, CO 80112

ALL INFORMATION CONTAINED HEREIN IS PROPERTY OF PEREGRINE AND SHALL NOT BE DUPLICATED WITHOUT THE EXPRESS WRITTEN CONSENT OF PEREGRINE

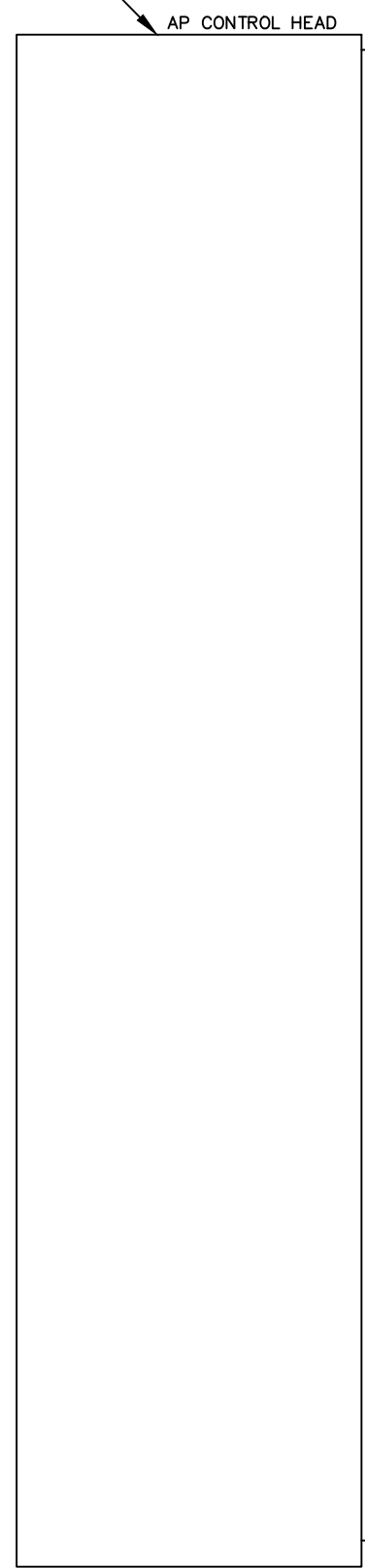
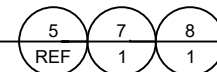
TITLE: AEROCRUZE 100 AUTOPILOT.
MOONEY M20 ELECTRICAL INSTALLATION

DWG NO: PA-201130-521 REV: C

DWG SIZE: B SCALE: N/A SHEET 1 OF 3

WEIGHT: N/A NEXT ASSEMBLY: N/A

ALL WIRING IS INCLUDED IN HARNESS



P1

DB-9

PITCH SERVO

6-PIN CONN

6-PIN CONN

LINK SENSOR

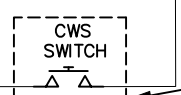
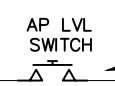
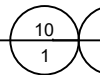
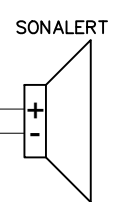
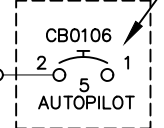
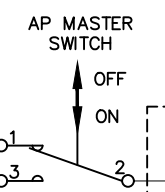
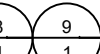
/7/

/6/

ROLL SERVO

DB-9

/7/



GPS/EFIS



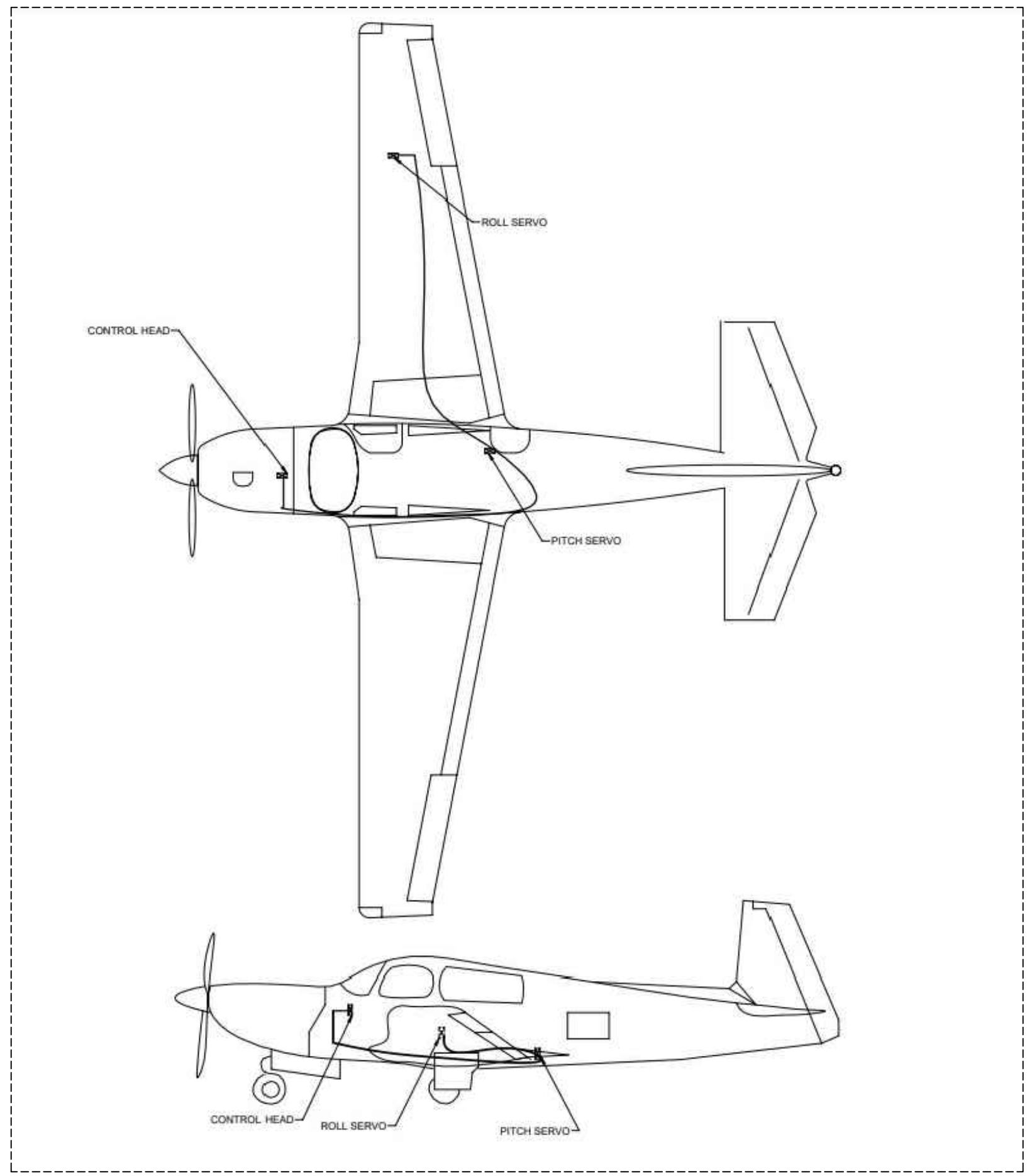
RS-232 OUT
GPS A429 OUT A
GPS A429 OUT B

/3/

DWG NO: PA-201130-521	REV: C
DWG SIZE: B	SCALE: N/A
SHEET 2 OF 3	

1 2 3 4 5 6 7 8 9 10 11 12

H
G
F
E
D
C
B
A



WIRE ROUTING

DWG NO: PA-201130-521		REV: C
DWG SIZE: B	SCALE: N/A	SHEET 3 OF 3

1 2 3 4 5 6 7 8 9 10 11 12